

Model	DF61 (PYRENEES)	Volt/Hz	Date of Modification	Serial Number
Modified Article	Parts Catalog			
Reason for Modification	Parts Catalog Correction			

Please correct your parts catalog as follows:

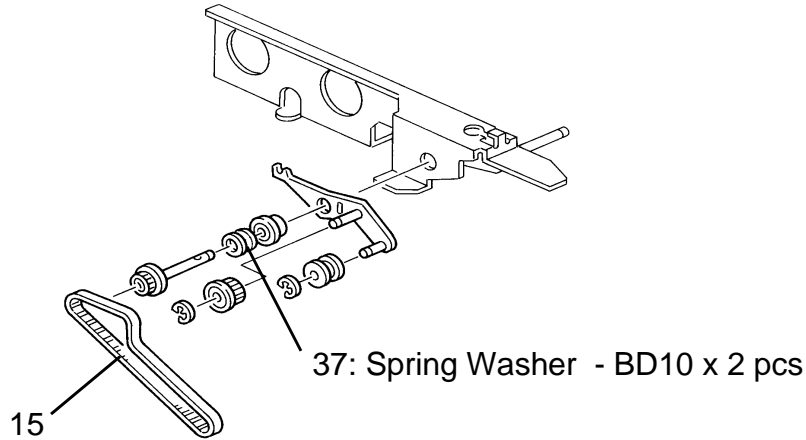
Incorrect P/N	Incorrect Description	Correct P/N	Correct Description	Parts Catalog	
				Index No.	Page
A5482171	Paper Feed Shaft	A5481271	Separation Roller	9	5

M. Iwasa, Manager
Technical Support Department

MODEL NAME	V/Hz	DESTINATION	CODE	SERIAL NUMBER
DF61	115/60	USA, Canada	A548-15	/
DF61	115/60 220, 240/50	Whole World	A548-17	
DF61	115/60 220, 240/50	Whole World	A548-22	
DF61	220, 240/50	Europe	A548-26	

Model	DF61 (PYRENEES)	Volt/Hz	Date of Modification	Serial Number
Modified Article	Parts Catalog			
Reason for Modification	Parts Catalog Correction			

Please correct your parts catalog as follows:



New P/N	Description	Q'ty Used	Parts Catalog	
			Index No.	Page
59374158	Spring Washer - BD10	0 → 2	* 37	13

* New Index

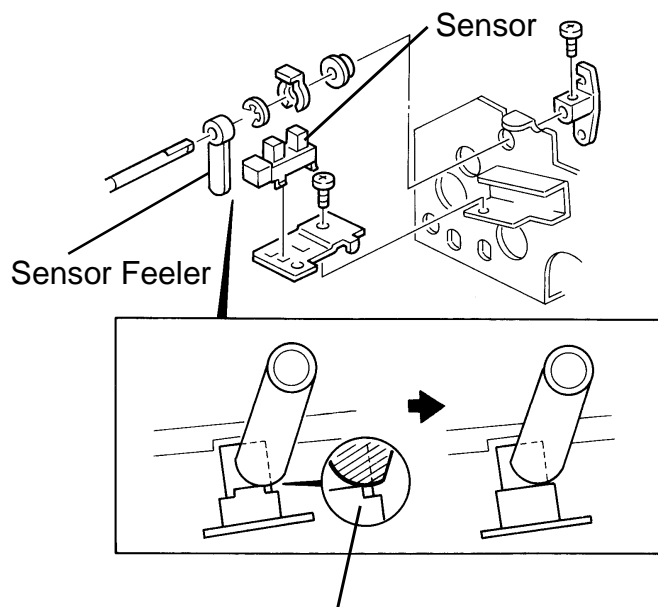
M. Iwasa, Manager
 Technical Support Department

MODEL NAME	V/Hz	DESTINATION	CODE	SERIAL NUMBER
DF61	115/60	USA, Canada	A548-15	/
DF61	115/60 220, 240/50	Whole World	A548-17	
DF61	115/60 220, 240/50	Whole World	A548-22	
DF61	220, 240/50	Europe	A548-26	

Model	DF61	Volt/Hz	Date of Modification	Serial Number
Modified Article	Original Sensor	No serial number cut-in information.		
Reason for Modification	To prevent the original sensor feeler from being caught			

The shape of the photointerruptor has been changed as shown below to prevent the original sensor feeler from being caught by the notch at the edge of the sensor.

Old P/N	New P/N	Description	Q'ty Used	Inter-changeability	Parts Catalog	
					Index No.	Page
AW02 0021	AW02 0075	Photointerruptor	1 → 1	X/O	9	7



The feeler may be caught by the notch at the edge of the sensor.

M. Iwasa, Manager
 Technical Support Department

Model	DF61	Volt/Hz	Date of Modification	Serial Number
Modified Article	Main Control Board, ROM			
Reason for Modification	To reduce the uncopied area when making a copy in the non-standard size original mode.			

Old P/N	New P/N	Description	Q'ty Used	Interchangeability	Parts Catalog	
					Index No.	Page
A548 5520	A548 5530	Main Control Board	1 → 1	X/O	31	13
A548 5810	A548 5815	IC - 256K x 8 150NS	1 → 1	X/O	35	13

The detected size of originals has been changed as shown in the tables for the above reason.

Detected Size Table

L: Lengthwise
S: Sideways

Old

Original Length (Feed Drive)	Original Width			
	Equal to or Less than 230mm	230 ~ 263.5 mm	263.5 ~ 288 mm	Equal to or More than 288 mm
428mm	11" x 17" L	11" x 17" L	11" x 17" L	11" x 17" L
428 ~ 378mm	11" x 15" L	11" x 15" L	11" x 15" L	11" x 15" L
378 ~ 353mm	8.5" x 14" L	10" x 14" L	11" x 15" L	11" x 15" L
353 ~ 327mm	8" x 13" L	10" x 14" L	11" x 15" L	11" x 15" L
327 ~ 294mm	A4 L	10" x 14" L	11" x 15" L	11" x 15" L
294 ~ 276mm	8.5" x 11" L	10" x 14" L	11" x 15" L	11" x 15" L
276 ~ 251mm	8" x 10" L	10" x 14" L	11" x 15" L	11" x 15" L
251 ~ 207mm	5.5" x 8.5" S	8.5" x 11" S	8.5" x 11" S	A4 S
Equal to or Less than 207mm	5.5" x 8.5" S	8.5" x 11" S	8.5" x 11" S	A4 S

Detected Size Table

New

Original Length (Feed Drive)	Original Width			
	Equal to or Less than 230mm	230 ~ 263.5 mm	263.5 ~ 288 mm	Equal to or More than 288 mm
416mm	11" x 17" L	11" x 17" L	11" x 17" L	11" x 17" L
416 ~ 378mm	11" x 15" L	11" x 15" L	11" x 15" L	11" x 15" L
378 ~ 353mm	8.5" x 14" L	10" x 14" L	11" x 15" L	11" x 15" L
353 ~ 320mm	8" x 13" L	10" x 14" L	11" x 15" L	11" x 15" L
320 ~ 294mm	A4 L	10" x 14" L	11" x 15" L	1" x 15" L
294 ~ 276mm	8.5" x 11" L	10" x 14" L	11" x 15" L	11" x 15" L
276 ~ 237mm	8" x 10" L	10" x 14" L	11" x 15" L	11" x 15" L
237 ~ 159mm	5.5" x 8.5" L	8.5" x 11" S	8.5" x 11" S	A4 S
Equal to or Less than 159mm	5.5" x 8.5" S	8.5" x 11" S	8.5" x 11" S	A4 S

Old

Original Length (Feed Drive)	Original Width			
	Equal to or Less than 230mm	230 ~ 263.5 mm	263.5 ~ 288 mm	Equal to or More than 288 mm
Equal to or More than 417mm	11" x 17" L	11" x 17" L	11" x 17" L	A3 L
417 ~ 385mm	* 8 KAI L	* 8 KAI L	* 8 KAI L	A3 L
385 ~ 353mm	B4 L	B4 L	A3 L	A3 L
353 ~ 327mm	8.5" x 13" L	B4 L	A3 L	A3 L
327 ~ 294mm	A4 L	B4 L	A3 L	A3 L
294 ~ 276mm	8.5" x 11" L	B4 L	A3 L	A3 L
276 ~ 264mm	* 16 KAI L	B4 L	A3 L	A3 L
264 ~ 254mm	B5 L	B4 L	A3 L	A3 L
254 ~ 207mm	A5 L	8.5" x 11" S	8.5" x 11" S	A4 S
207 ~ 191mm	A5 L	* 16 KAI S	* 16 KAI S	A4 S
191 ~ 179mm	B6 L	B5 S	A4 S	A4 S
179 ~ 145mm	A5 S	B5 S	A4 S	A4 S
Equal to or Less than 145mm	B6 S	B5 S	A4 S	A4 S

- * 8 KAI : (267 mm x 390 mm/lengthwise)
- * 16 KAI : (267 mm x 195 mm/sideways)

New

Original Length (Feed Drive)	Original Width			
	Equal to or Less than 230mm	230 ~ 263.5 mm	263.5 ~ 288 mm	Equal to or More than 288 mm
Equal to or More than 417mm	11" x 17" L	11" x 17" L	11" x 17" L	A3 L
417 ~ 385mm	* 8 KAI L	* 8 KAI L	* 8 KAI L	A3 L
385 ~ 353mm	B4 L	B4 L	A3 L	A3 L
353 ~ 320mm	8.5" x 13" L	B4 L	A3 L	A3 L
320 ~ 294mm	A4 L	B4 L	A3 L	A3 L
294 ~ 276mm	8.5" x 11" L	B4 L	A3 L	A3 L
276 ~ 266mm	* 16 KAI L	B4 L	A3 L	A3 L
266 ~ 237mm	B5 L	B4 L	A3 L	A3 L
237 ~ 207mm	A5 L	8.5" x 11" S	8.5" x 11" S	A4 S
207 ~ 191mm	A5 L	* 16 KAI S	* 16 KAI S	A4 S
191 ~ 167mm	B6 L	B5 S	A4 S	A4 S
167 ~ 145mm	A5 S	B5 S	A4 S	A4 S
Equal to or Less than 145mm	B6 S	B5 S	A4 S	A4 S

- * 8 KAI : (267 mm x 390 mm/lengthwise)
- * 16 KAI : (267 mm x 195 mm/sideways)

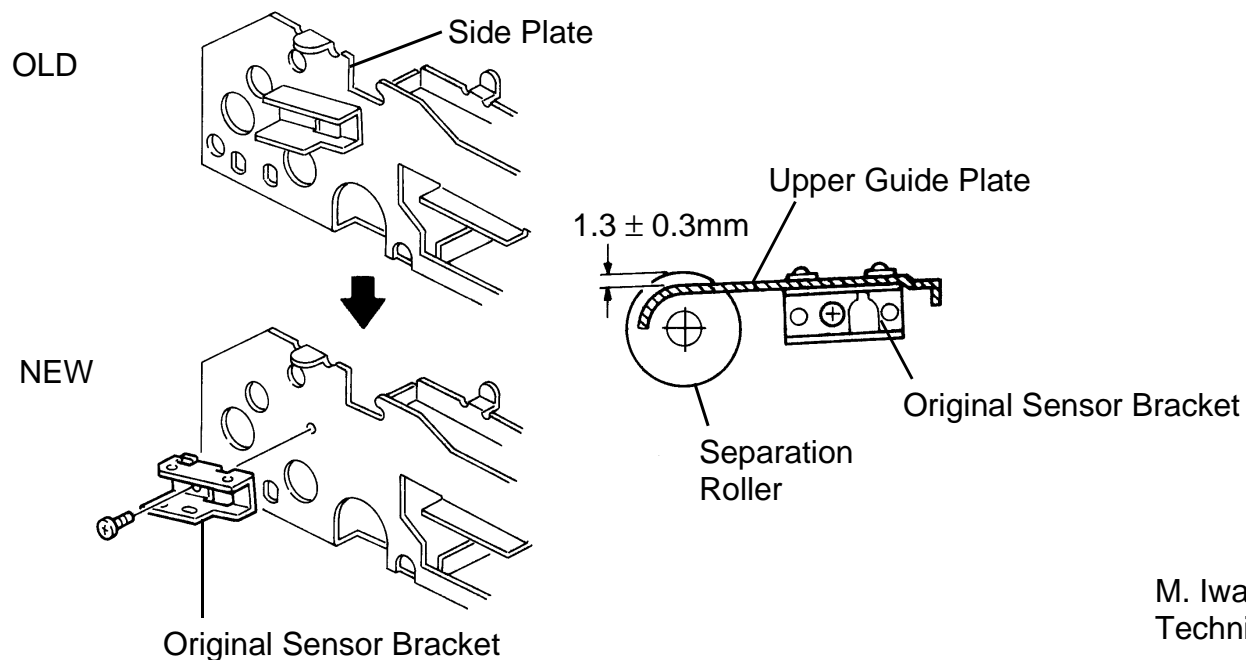
M. Iwasa, Manager
Technical Support Department

MODEL NAME	V/Hz	DESTINATION	CODE	SERIAL NUMBER
DF61	115/60	USA, Canada	A548-15	2A35060001
DF61	115/60 220, 240/50	Whole World	A548-17	A3765052048
DF61	115/60 220, 240/50	Whole World	A548-22	8785060001
DF61	220, 240/50	Europe	A548-26	3H10650001

Model	DF61	Volt/Hz	Date of Modification	Serial Number
Modified Article	Original Sensor Bracket	No serial number cut-in information		
Reason for Modification	To make the upper guide plate position adjustable at the assembly line			

The original sensor bracket has been separated from the side plate as shown below.

Old P/N	New P/N	Description	Q'ty Used	Inter-changeability	Parts Catalog	
					Index No.	Page
	A548 1127	Original Sensor Bracket	0 → 1			



M. Iwasa, Manager
 Technical Support Department

Model: DF61	Date: 30-Jun-96	No.: 6
-------------	-----------------	--------

MB Correction

The items in bold italics have been corrected or added.

Modified Article: Hinges		Prepared by: M.Kitajima	
From: GTSS Field Information Dept			
Reason for Modification:	<input type="checkbox"/> Parts catalog correction	<input type="checkbox"/> Vendor change	<input type="checkbox"/> To meet standards ()
	<input type="checkbox"/> To facilitate assembly	<input type="checkbox"/> To improve reliability	
	<input type="checkbox"/> Part standardization	<input type="checkbox"/> Other	

Old part number	New part number	Description	Qty	Int	Page	Index	Note
A584 1510	<i>A548 0123</i>	Left Hinge	1→1	<i>X/O</i>	7	26	
A548 1520	<i>A548 0124</i>	Right Hinge	1→1	<i>X/O</i>	11	26	

Note: ~~The interchangeability of these parts is O/O as a set.~~

Model: DF61		Date: 15-Mar-97	No: 7
Modified Article: Driven Roller Ass'y		Prepared by: S. Hizen	
From: QAC 1st Field Information Dept.		Checked by: T. Inoue <i>T. Inoue</i>	
Reason for Modification:	<input type="checkbox"/> Parts catalog correction <input type="checkbox"/> Vendor change <input type="checkbox"/> To meet standards <input type="checkbox"/> To facilitate assembly <input type="checkbox"/> To improve reliability () <input checked="" type="checkbox"/> Part Standardization <input type="checkbox"/> Other		

Old part number	New part number	Description	Qty	Int	Page	Index	Note
A548 1241	A663 1241	Driven Roller Ass'y	1 - 1	O/O	3	12	

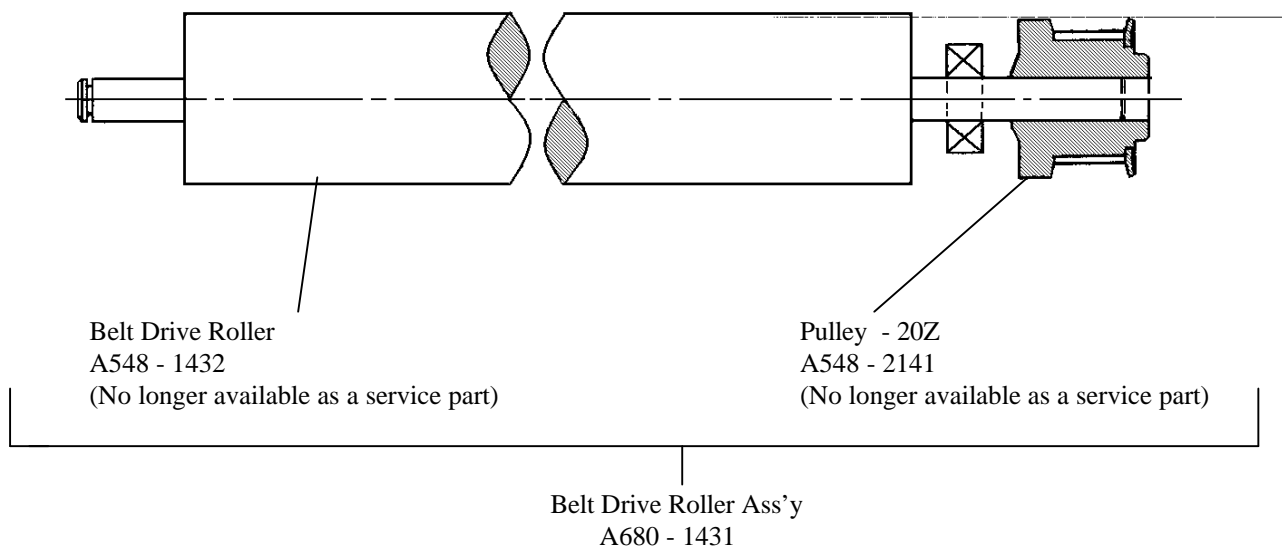
The driven roller ass'y has been changed to standardize it with the Document Feeder for the Phoenix MarkII.

Model: DF61		Date: 31-Mar-97	No: 8
Modified Article: Belt Drive Roller		Prepared by: S.Hizen	
From: QAC 1st Field Information Dept.		Checked by: T. Inoue <i>T. Inoue</i>	
Reason for Modification:	<input checked="" type="checkbox"/> Parts catalog correction	<input type="checkbox"/> Vendor change	<input type="checkbox"/> To meet standards
	<input type="checkbox"/> To facilitate assembly	<input type="checkbox"/> To improve reliability	()
	<input checked="" type="checkbox"/> Part Standardization	<input type="checkbox"/> Other	

Old part number	New part number	Description	Qty	Int	Page	Index	Note
A548-1432		Belt Drive Roller	1		9	1	
A548-2141		Timing Pulley - 20Z	1		9	13	
	A680-1431	Belt Drive Roller Ass'y	1	X/O	9	1	

The individual part numbers for the belt drive roller and the timing pulley - 20Z are listed in the parts catalog, but the roller shaft is actually press-fit into the pulley on the production line. The pulley - 20Z cannot be installed on the roller shaft in the field.

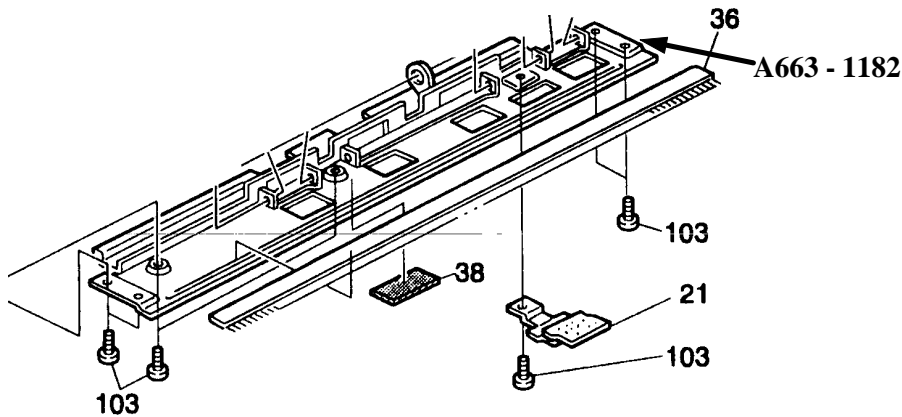
A part number has been assigned for the belt drive roller assembly instead of for the belt drive roller and the timing pulley.



Model: DF61		Date: 15-Apr-97	No: 9
Modified Article: Parts Catalog		Prepared by: S.Hizen	
From: QAC 1st Field Information Dept.		Checked by: T. Inoue <i>T. Inoue</i>	
Reason for Modification:	<input checked="" type="checkbox"/> Parts catalog correction	<input type="checkbox"/> Vendor change	<input type="checkbox"/> To meet standards
	<input type="checkbox"/> To facilitate assembly	<input type="checkbox"/> To improve reliability	()
	<input type="checkbox"/> Part standardization	<input type="checkbox"/> Other	

Old part number	New part number	Description	Qty	Int	Page	Index	Note
	A663 - 1182	Base Bracket - Original Feed	1	—	5	40	

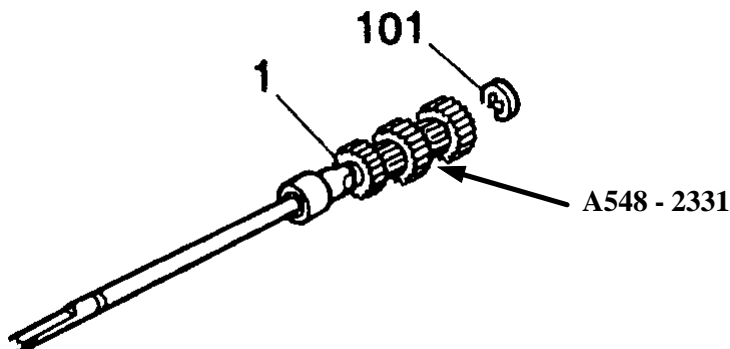
A part number has been assigned for the Base Bracket - Original Feed.



The part number #A548 - 2331 listed on page 5 (Index 1) is for the entire assembly unit. The description of the Index 1 has been corrected as follows.

Incorrect Description	Correct Description	Page	Index
Gear - 23Z	Drive Gear Ass'y	5	1

Note: A part number has not been assigned for the individual part.



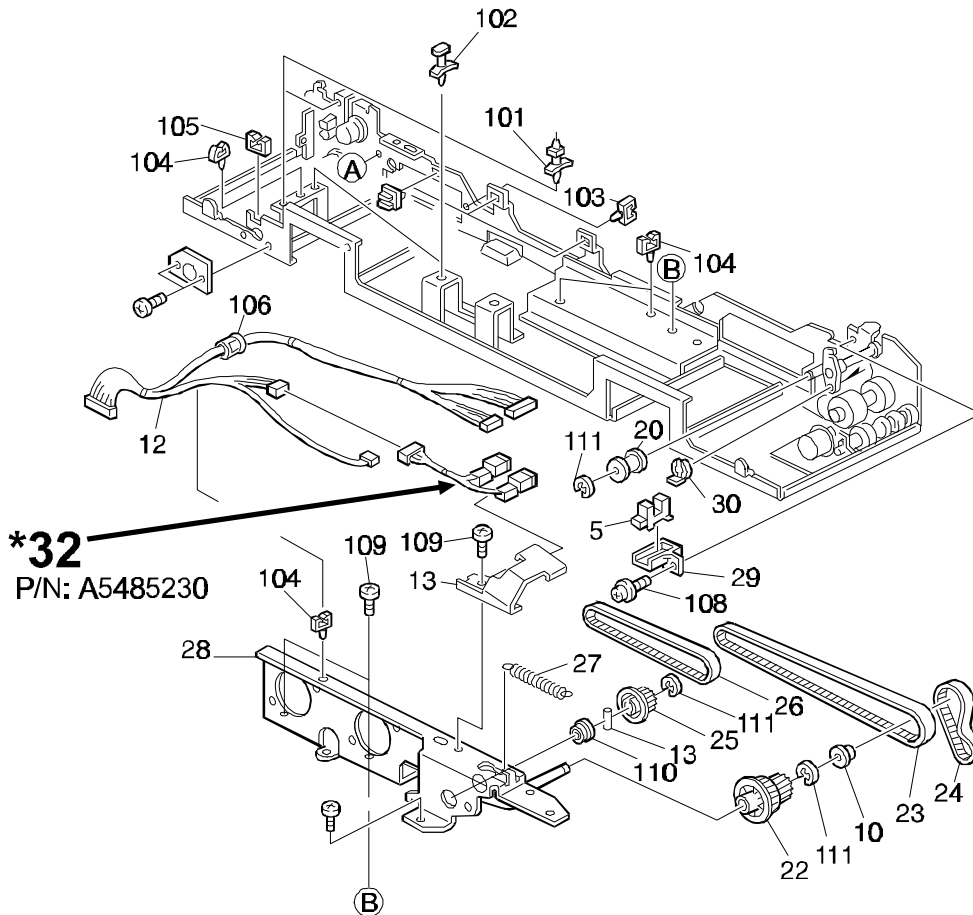
Model: DF61		Date: 30-Jun-97	No: 10
Modified Article: Parts Catalog Correction		Prepared by: S. Hizen	
From: QAC 1st Field Information Dept.			
Reason for Modification:	<input checked="" type="checkbox"/> Parts catalog correction	<input type="checkbox"/> Vendor change	<input type="checkbox"/> To meet standards
	<input type="checkbox"/> To facilitate assembly	<input type="checkbox"/> To improve reliability	()
	<input type="checkbox"/> Part Standardization	<input type="checkbox"/> Other	

(No serial number cut-in information)

Page 12

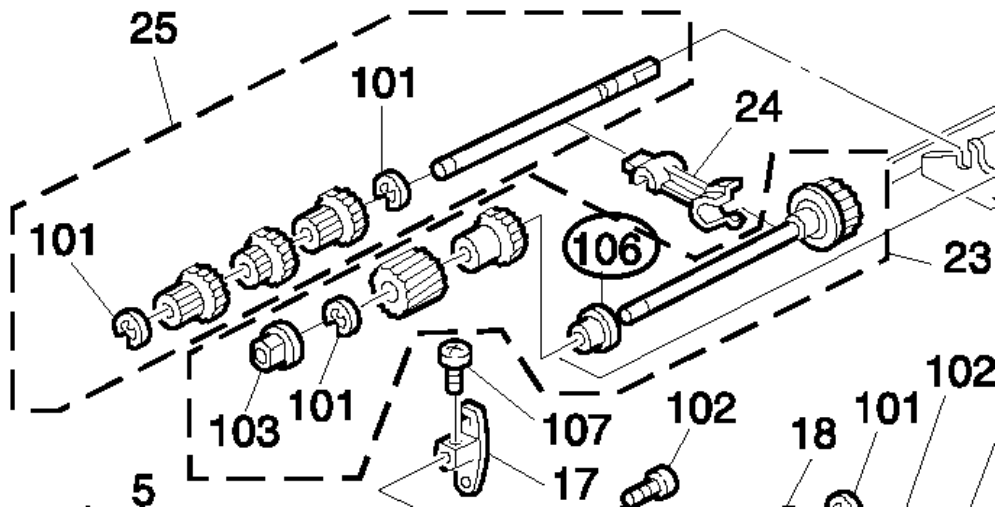
The index number was missing inside the following illustration.
Please add the following number as shown below.

New part number	Description	Qty	Page	Index
A548 5230	Indicator Harness	1	12	32



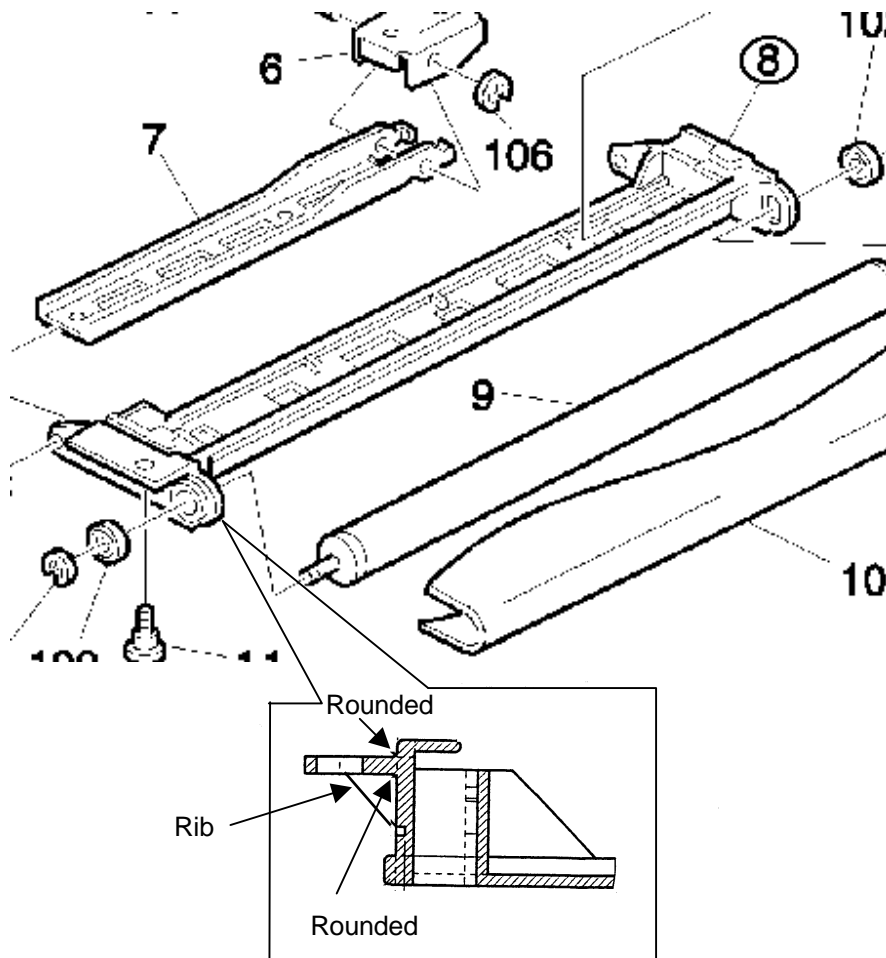
Model: DF61		Date: 31-Aug-97	No: 11
Modified Article: Ball Bearing		Prepared by: S.Hizen	
From: QAC 1st Field Information Dept.			
Reason for Modification:	<input type="checkbox"/> Parts catalog correction	<input type="checkbox"/> Vendor change	<input type="checkbox"/> To meet standards
	<input type="checkbox"/> To facilitate assembly	<input type="checkbox"/> To improve reliability	()
	<input checked="" type="checkbox"/> Part standardization	<input type="checkbox"/> Other	

Old part number	New part number	Description	Qty	Int	Page	Index	Note
07403906	A2323564	Ball Bearing – 6x15x5		O/O	7	106	



Model: DF61		Date: 31-Aug-97	No: 12
Modified Article: Transport Stay		Prepared by: S.Hizen	
From: QAC 1st Field Information Dept.			
Reason for Modification:	<input type="checkbox"/> Parts catalog correction	<input type="checkbox"/> Vendor change	<input type="checkbox"/> To meet standards
	<input type="checkbox"/> To facilitate assembly	<input checked="" type="checkbox"/> To improve reliability	()
	<input type="checkbox"/> Part standardization	<input type="checkbox"/> Other	

Old part number	New part number	Description	Qty	Int	Page	Index	Note
A5481422	A6631422	Transport Stay	1 - 1	X/O	9	8	



The part of the transport stay which comes in contact with the surface of the transfer belt has been changed from a smooth surface to a rough one to prevent noise.

The part of the stay, shown in the illustration, has been rounded and a rib has been added to prevent breakage due to stress.

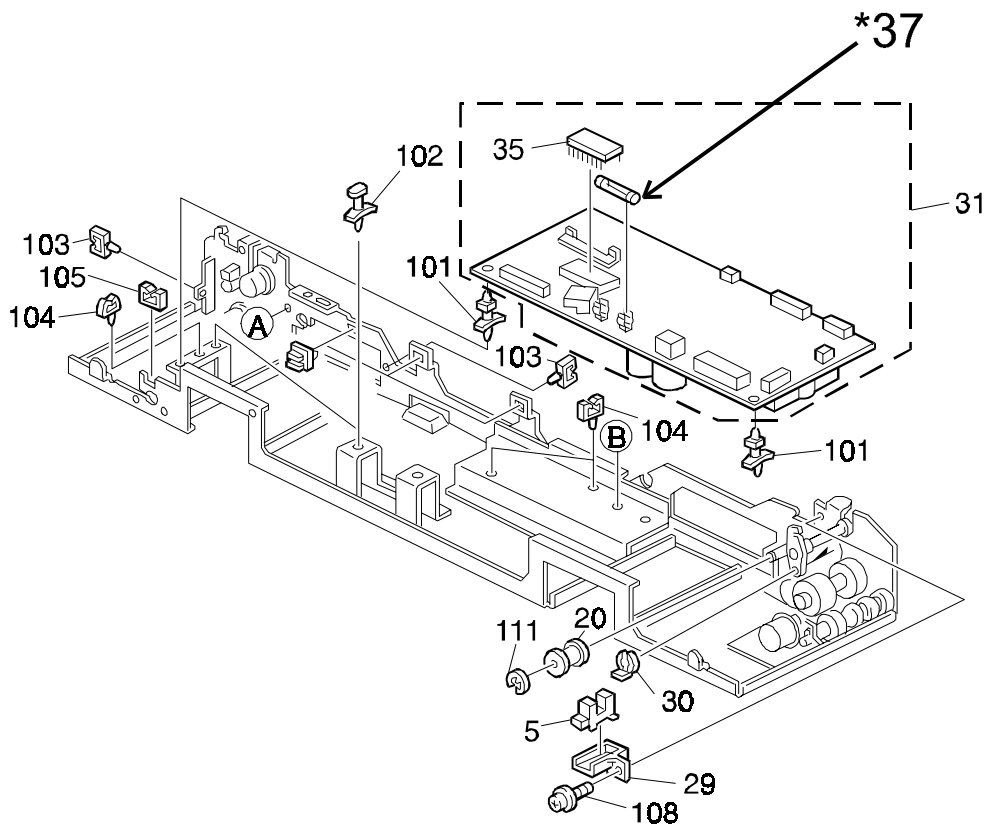
Model: DF61	Date: 31-Aug-97	No: 12
-------------	-----------------	--------

MODEL NAME	V/ Hz	DESTINATION	CODE	SERIAL NUMBER
DF61	115/ 60	USA, Canada	A548- 15	2A3707xxxx
DF61	220, 240/ 50 115/ 60	Whole World	A548- 17	A3767070001
DF61	220, 240/ 50 115/ 60	Whole World	A548- 22	8787070001
DF61	220, 240/ 50	Europe	A548- 26	3H1707xxxx

Model: DF61		Date: 15-Sep-97	No: 13
Modified Article: Parts Catalog Corrcion		Prepared by: J.Kasamoto	
From: QAC 1st Field Information Dept.			
Reason for Modification:	<input checked="" type="checkbox"/> Parts catalog correction	<input type="checkbox"/> Vendor change	<input type="checkbox"/> To meet standards
	<input type="checkbox"/> To facilitate assembly	<input type="checkbox"/> To improve reliability	()
	<input type="checkbox"/> Part Standardization	<input type="checkbox"/> Other	

Please add the following part to your parts catalog.

New part number	Description	Qty	Page	Index
1107 0750	Fuse - 3.15A 250V	1	13	37

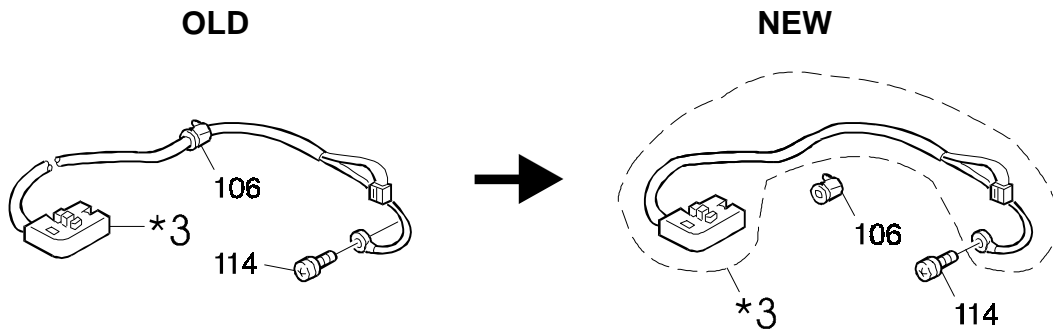


Model: DF61		Date: 15-Nov-97	No: 14
Modified Article: Parts Catalog		Prepared by: M. Kitajima	
From: QAC Field Information Dept.			
Reason for Modification:	<input checked="" type="checkbox"/> Parts catalog correction	<input type="checkbox"/> Vendor change	<input type="checkbox"/> To meet standards
	<input type="checkbox"/> To facilitate assembly	<input type="checkbox"/> To improve reliability	()
	<input type="checkbox"/> Part Standardization	<input type="checkbox"/> Other	

Please correct your parts catalog as follows:

Page 13

Old part number	New part number	Description	Page	Index
A548 5281	A548 5280	Interface Harness	13	3



MB Correction

Reissue date: **31-May-98**

The items in bold italics have been corrected or added.

Model: DF61		Date: 30-Apr-98	No: 15
Modified Article: Transport Belt		Prepared by: M.Kitajima	
From: QAC Field Information Dept.			
Reason for Modification:	<input type="checkbox"/> Parts catalog correction <input type="checkbox"/> Vendor change <input type="checkbox"/> To meet standards <input type="checkbox"/> To facilitate assembly <input checked="" type="checkbox"/> To improve reliability () <input type="checkbox"/> Part standardization <input type="checkbox"/> Other		

To reduce the possibility of original jams, the material of the transport belt has been changed. The interchangeability code is O/O.

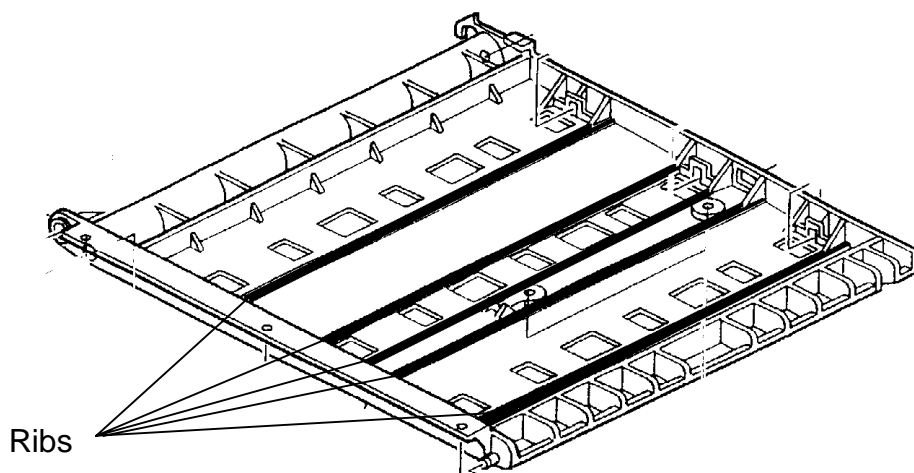
Old part number	New part number	Description	Qty	Int	Page	Index	Note
A5481481	A5481 482	Transport Belt	1-1	O/O	9	10	

Model: DF61		Date: 30-Apr-98	No: 16
Modified Article: Transport Base Plate		Prepared by: M.Kitajima	
From: QAC Field Information Dept.			
Reason for Modification:	<input type="checkbox"/> Parts catalog correction	<input type="checkbox"/> Vendor change	<input type="checkbox"/> To meet standards
	<input type="checkbox"/> To facilitate assembly	<input checked="" type="checkbox"/> To improve reliability	()
	<input type="checkbox"/> Part standardization	<input type="checkbox"/> Other	

To prevent the transport base plate from being bent, the height of the five ribs on this part has been increased by 15 mm.

If the transport base plate is bent, an original jam may occur as a result of the transport belt stopping.

Old part number	New part number	Description	Qty	Int	Page	Index	Note
A5481412	A6631412	Transport Base Plate	1-1	X/O	9	4	



Model: DF61	Date: 30-Apr-98	No: 16
-------------	-----------------	--------

MODEL NAME	V/ Hz	DESTINATION	CODE	SERIAL NUMBER
DF61	115/ 60	USA, Canada	A548- 15	Service Parts Only
DF61	115/ 60 220, 240/50	Whole World	A548- 17	A3767110001
DF61	115/ 60 220, 240/50	Whole World	A548- 22	8788020001
DF61	220, 240/ 50	Europe	A548- 26	Service Parts Only
DF61	115/60	USA, Canada	A548- 55	2A37910001
DF61	115/ 60 220, 240/ 50	Whole World	A548- 56	L0207111397
DF61	115/ 60 220, 240/ 50	Whole World	A548- 57	A3767901077
DF61	220, 240/ 50	Europe	A548- 62	8787910001
DF61	220, 240/ 50	Europe	A548- 66	3H19170001